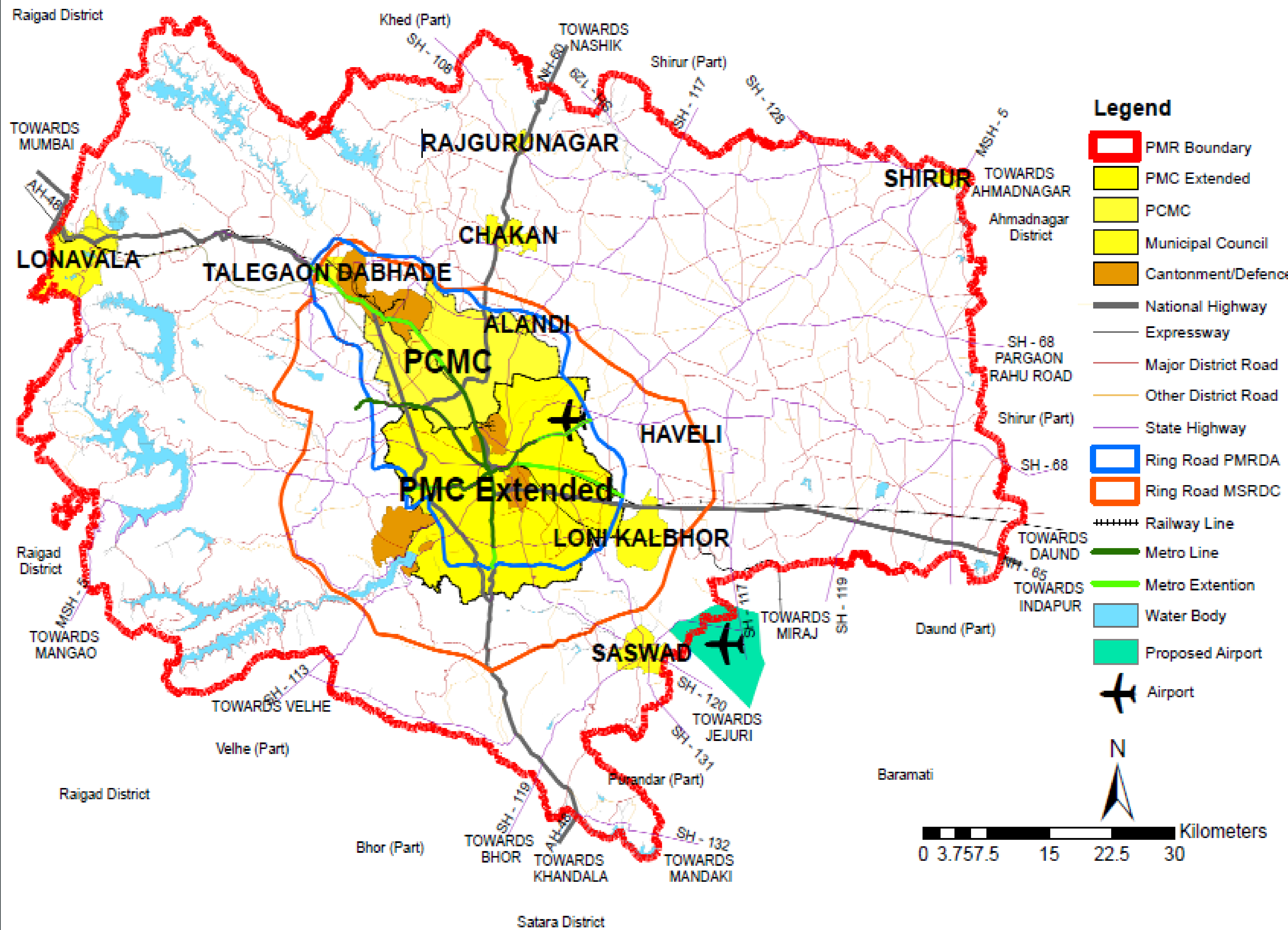


Regional transport network map in Pune Metropolitan Region

Map description and analysis



Introduction:

The Pune metropolitan region (PMR) is a sub part of Pune district which consist of 9 taluka out of which 3 talukas are completely included and 6 are partial.

Road hierarchy:

- The PMR includes a express way, 3 national highway, 1 major state highway 19 State highways.
- PMR consist of 5,202.3 km of total road length of Pune district i.e. 19,274.3 km, which 27% of Pune District roads

Road density:

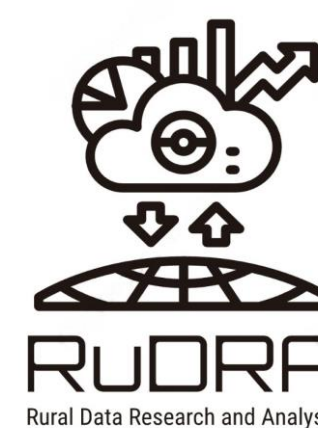
- Maval and Mulshi talukas have low road density per area due to restriction of western ghat region and less villages
- Bhor and Daund talukas have maximum road density

Rail connectivity:

- PMR is connected by the railway from the east and west direction with 3 existing rail routes i.e. Pune–Mumbai, Pune–Solapur, Pune–Miraj.
- The railway length passing through PMR is 159.5 km out 503.39 km of Pune division i.e.31.7 of total Pune Division rail length passes through the PMR.
- There are total 30 station in PMR, all of them are broad gauge and double track.

Air connectivity:

- PMR has one international airport located at Lohegaon and one proposed airport at Purandar
- It is 10 km away from Pune city and has connectivity through the SH-27 and a 18 meter wide road.



Team Name: RuDRA

Topic: Transport Network Map

Team member/lead:

Organization: Rural Data Research and Analysis Lab

Contact/email: www.data-lab.in